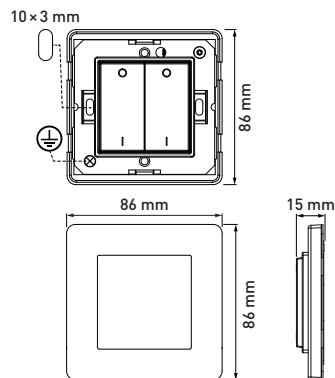


**Helvar Ltd**  
 Hawley Mill  
 Hawley Road  
 DARTFORD  
 DA2 7SY  
 UNITED KINGDOM  
[www.helvar.com](http://www.helvar.com)



## Connections

No wiring (power or communications) is required.

## Power

Signal power is generated by pressing the EnOcean button.

## Operation

**Operating frequency:** 868 MHz ISM band [Europe]

**Range:** 30 m (unobstructed space)

**Max. No. of switch panels per gateway:** 20

**Mechanical data**

**Dimensions:** 86 mm × 86 mm × 15 mm

**Weight:** 150 g

**Switch colour:** 18xW: white

18xB: black

**Material:** Switch rockers: plastic

**Frame:** Stainless steel (181 & 182)

Plastic (183 & 184)

**Mounting:** Mount to back box, or mount

on glass or flat surface.

**IP code:** IP30

## Operating conditions

**Ambient temperature:** 0 °C to +50 °C

**Relative humidity:** Max. 90 %, noncondensing

**Storage temperature:** -10 °C to +70 °C

## Conformity and standards

**Safety:** EN 60950-1

**RED 2014/53/EU:** EN 301489-3

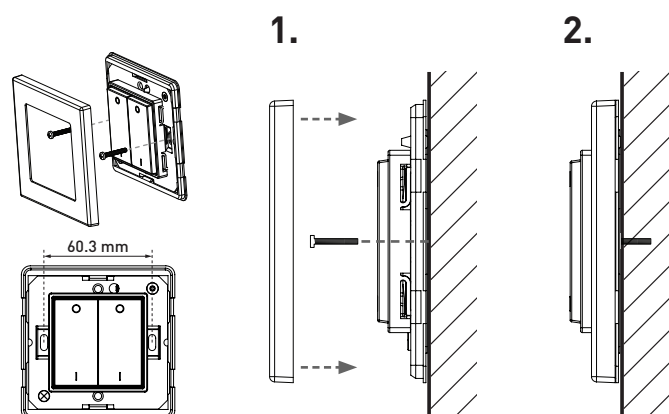
EN 300220-2

**Wireless protocol:** ISO/IEC 14543-3-10

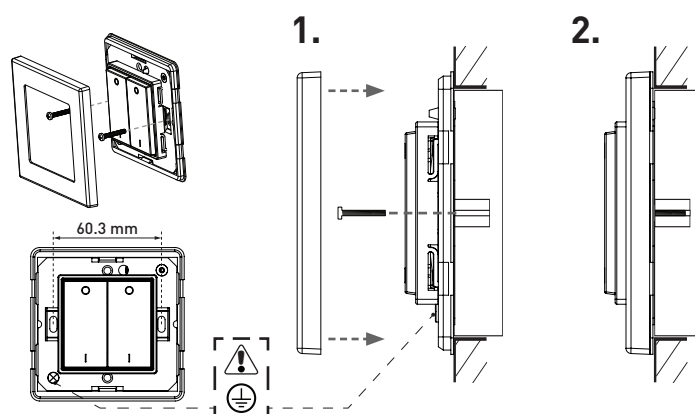
**Environment:** Complies with WEEE and

RoHS directives.

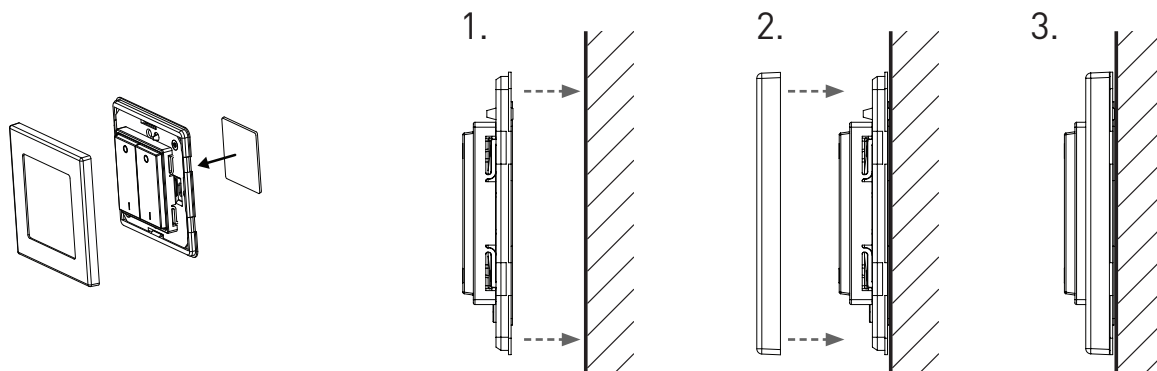
## Screw to solid wall



## Screw to back box



## Stick to wall or other surface



## Stick to glass or other smooth surface

